

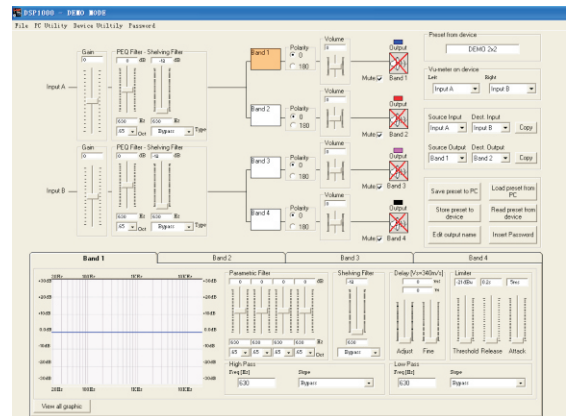
2 input / 4 output Digital Processor



Features

- ◆ The 2 input levels are displayed by rows of 6 level leds + 1 clip led.
- ◆ The 4 output levels are displayed by rows of 5 level leds + 1 clip led + 1 Limiter led.
- ◆ The unit has 2 analog inputs, a stereo digital input, and 4 analog outputs. Each input has 5 parametric filters and each output has 7 parametric filters.
- ◆ Both input and output filters can be selected to be Bell or Shelving filters.
- ◆ On the outputs a Hp and a Lp filters up to 24dB Oct.
- ◆ Output Limiter is working on the RMS value of the limiter's input.
- ◆ The Limiter's THR can range up to -30dBu.
- ◆ Each input and output channels have delays up to 850ms, with steps of 22usec.
- ◆ Linking functions between inputs and linking functions between outputs are available.
- ◆ A function is allowing to have ramps closing the output level on parameter changes when the unit is used as installation unit; This function can be excluded when the unit is used live and it is necessary to perform small changes to the set parameter...on the fly.
- ◆ The Pc SW for the remote control is allowing to connect in net up to 32 units.

Software interface



Specifications

User Memories	10
Recall Memories	20
Input Max Level	20dBu
Output Max Level	20dBu
VU Metering	7x LED Input /Output
THD+N	0.001%@1kHz 0dBu
S/N: Ratio	>110dBA
Frequency Response	20 Hz-20kHz+/-0.25dB
A/D and D/A Resolution	24bit
Process Resolution	24 x 32 bit
Display	LCD 2 x 20 alphanumeric
Inputs	2 x XLR Balance
Outputs	2 x XLR Balance
Size	1 inch, 1U
MAX delay	1697.996ms
Input gain	-12dB-+12d(±5dB)
Output gain	-12dB-+12d(±5dB)

